

L.V.R.R.
CH. ENGR. SIG. & COM.

CEMETERY ROAD, LANCASTER, N.Y.
AUTOMATIC GATES M.P. 434.57
NEW YORK STATE PUBLIC SERVICE COMMISSION CASE 18930
FILED B-12

MARKED FOR REMOVAL
OF SPEED SELECTION
SECTIONS

10-18-79
Wm

W.M.	S.T.
5-8-58	450

L.V.R.R.

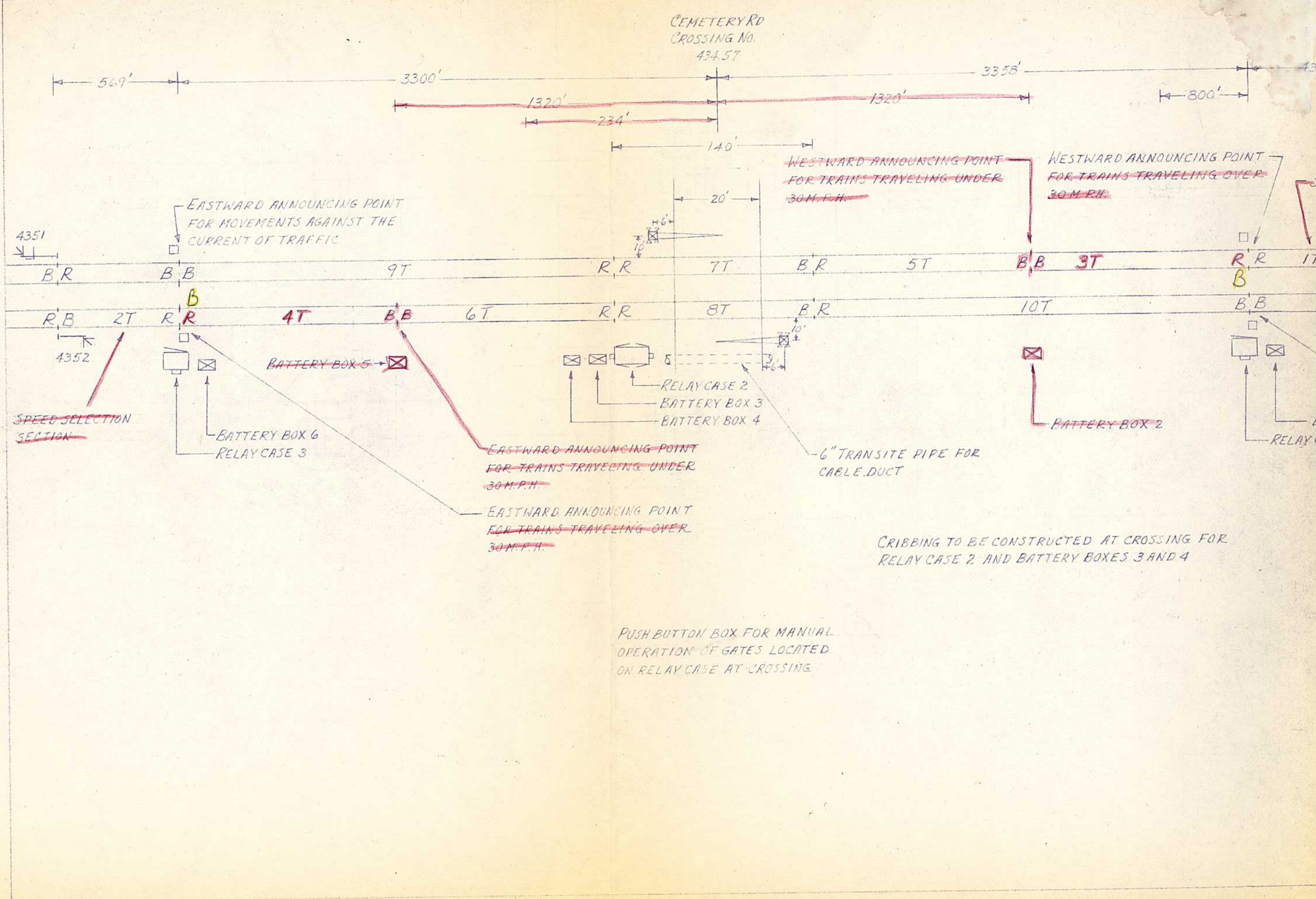
CHENGR. SIG. & COM.

PAGE	NAME
1	DATA SHEET
2	TRACK PLAN
3	CIRCUITS FOR SIGNAL CONTROL
4	CIRCUITS FOR TRACK RELAYS
5	CIRCUITS FOR SR & TR RELAYS
6	CIRCUITS FOR GCS & GCR RELAYS
7	CIRCUITS FOR FLASHERS
8	CIRCUITS FOR GATES
9	CIRCUITS FOR POWER SUPPLY
10	RELAY LAYOUT CASE 2
11	TERMINAL ARRANGEMENT CASE 2
12	RELAY CASE 1 DETAIL
13	RELAY CASE 3 DETAIL
14	DETAIL BATTERY BOXES 1 AND 2
15	DETAIL BATTERY BOXES 3 AND 4
16	CABLE PLAN

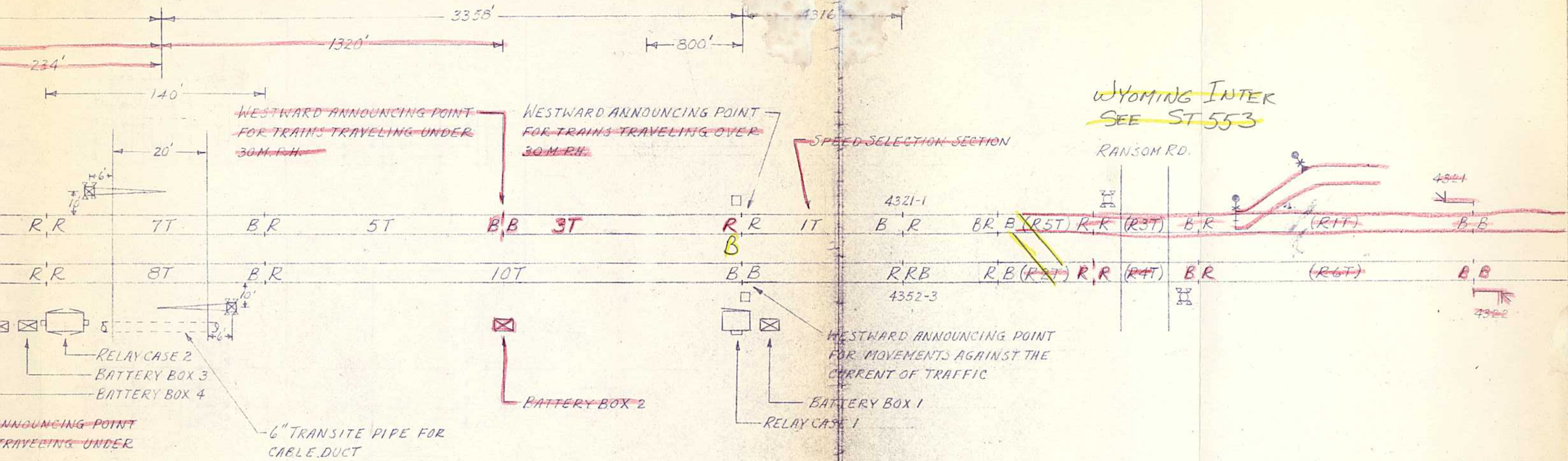
CIRCUITS BY W.M.
CHECKED BY R.T.

W.M. S.T.

5-13-58 450



CEMETERY RD
CROSSING No.
434.57



~~ANNOUNCING POINT
TRAVELING UNDER~~

~~ANNOUNCING POINT
TRAVELING OVER~~

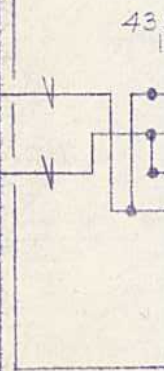
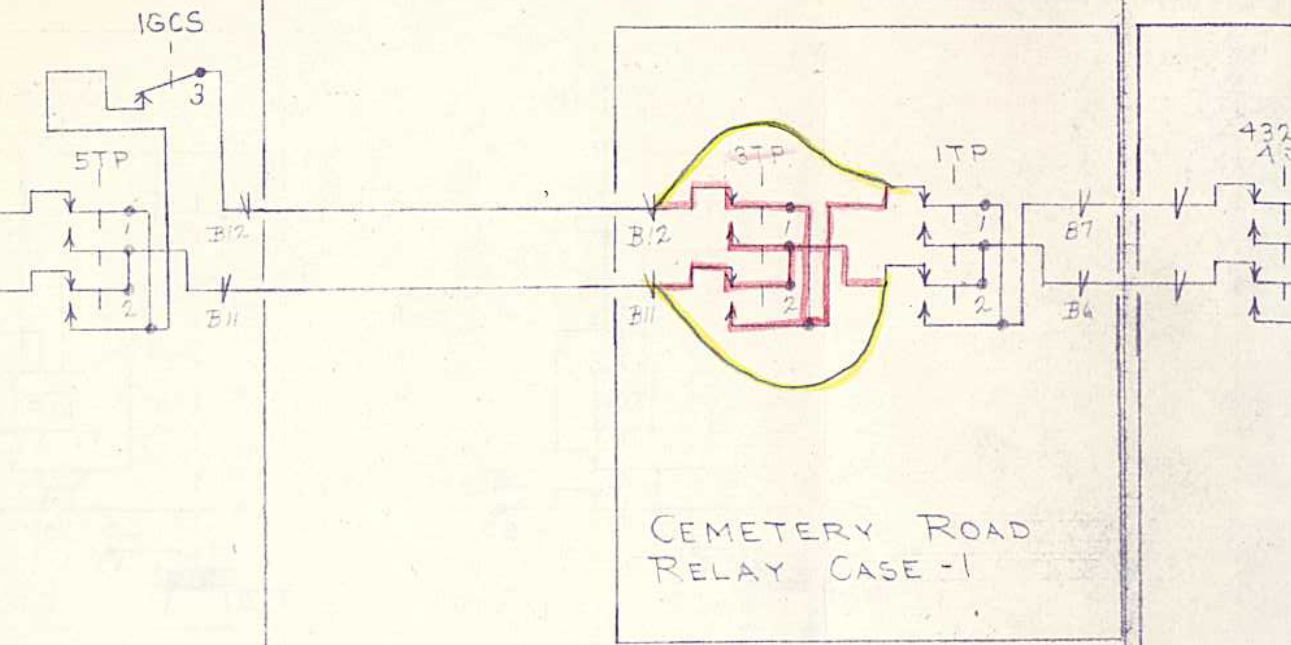
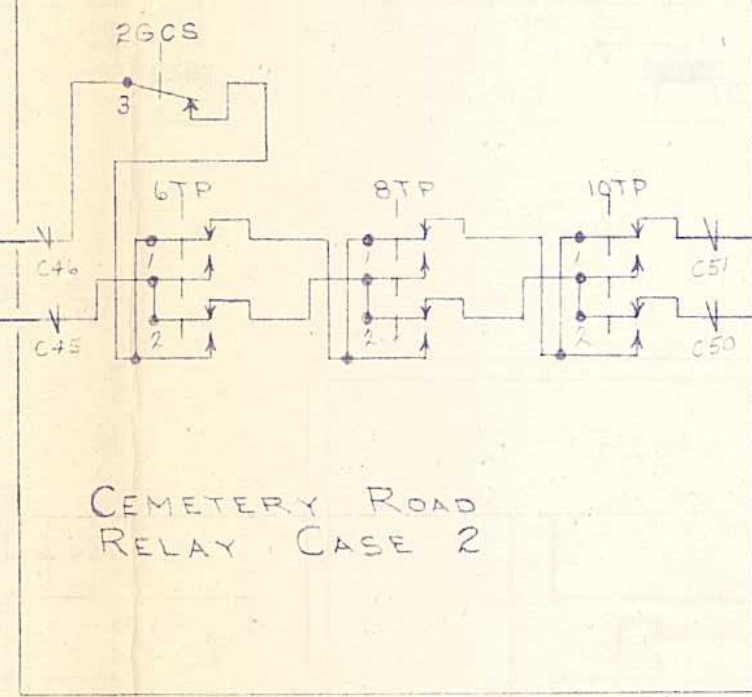
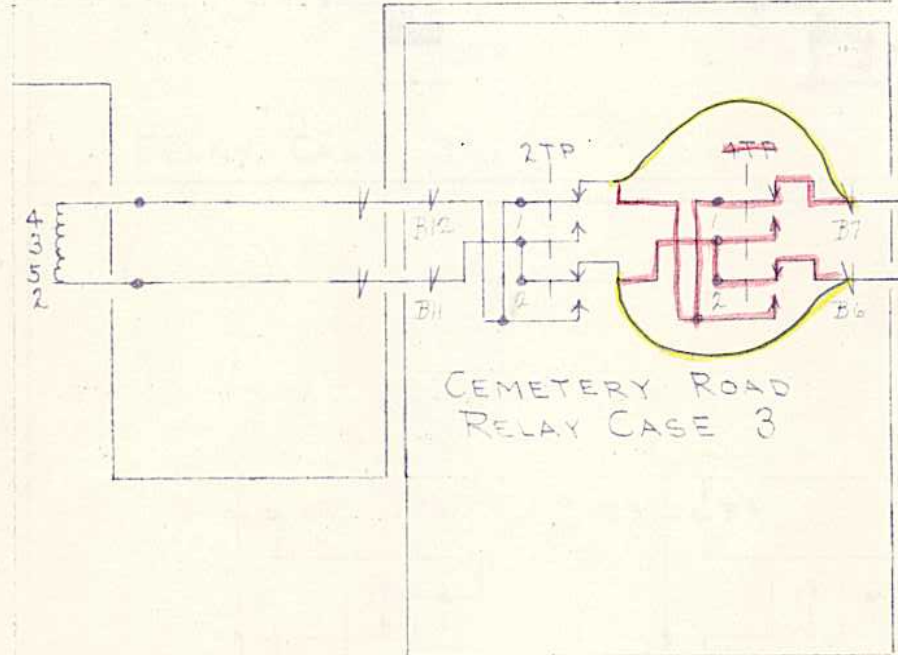
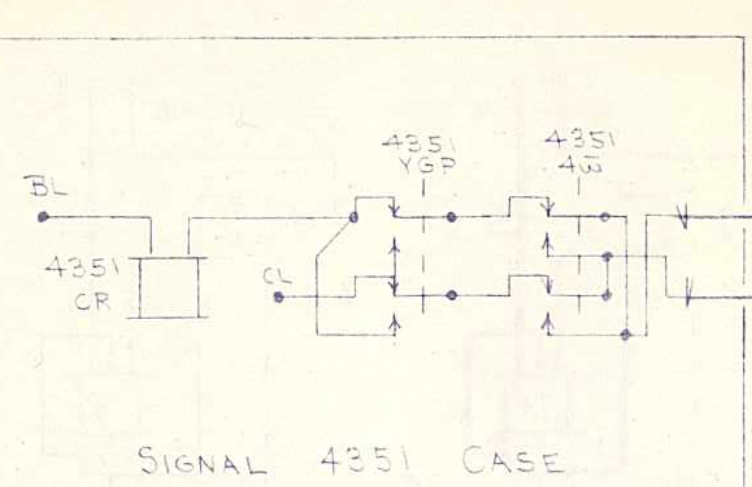
CRIBBING TO BE CONSTRUCTED AT CROSSING FOR
RELAY CASE 2 AND BATTERY BOXES 3 AND 4

□ = "HIGHWAY CIRCUIT" SIGN

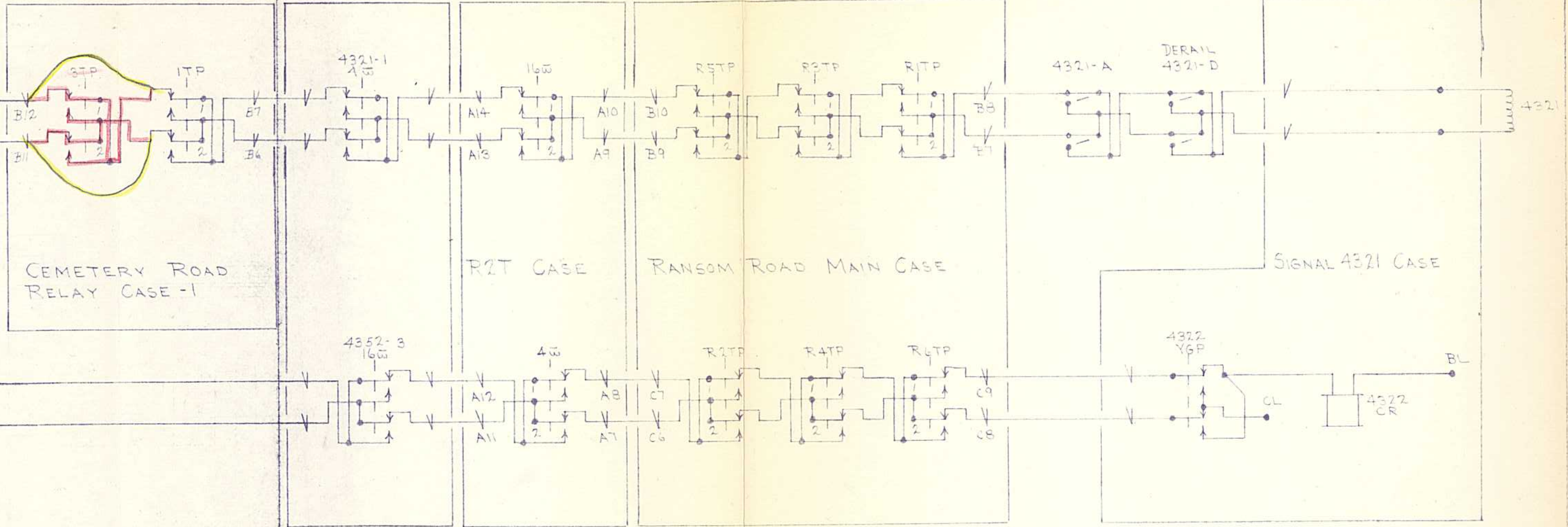
PUSH BUTTON BOX FOR MANUAL
OPERATION OF GATES LOCATED
ON RELAY CASE AT CROSSING

REV. 7-6-59
REVISED AS IN
SERVICE 6-15-59

R.T.	ST
5-8-58	450



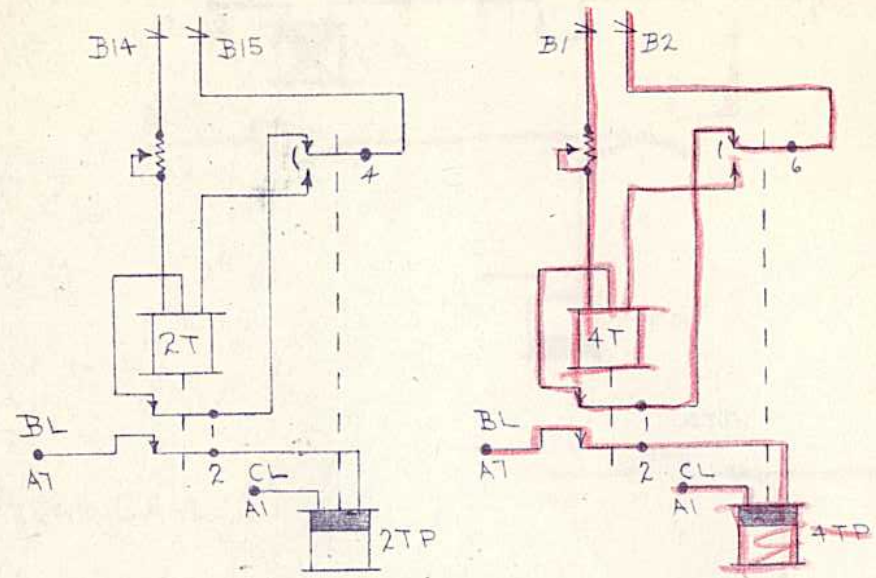
L.V.R.R.
CH. ENGR. SIG. & COM.



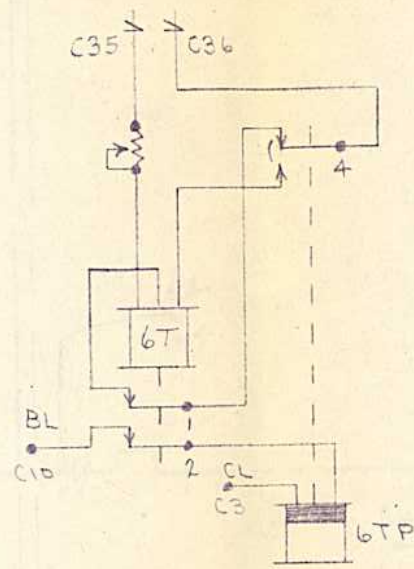
REVISED AS IN SERVICE 6-15-59
 REVISED 3-17-59
 CIRCUITS BY W.M.
 CHECKED BY R.T.
 W.M. ST
 5-8-58 450

L.V.R.R.

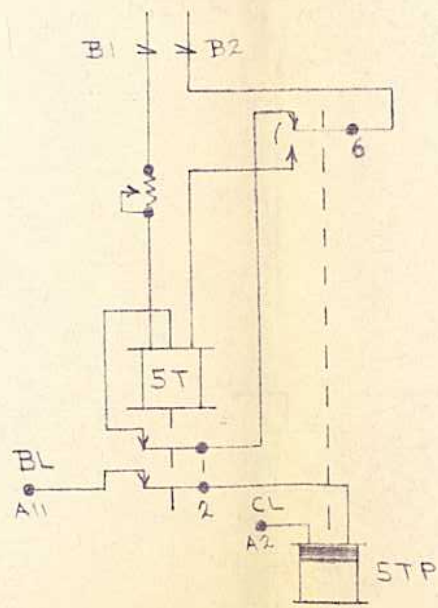
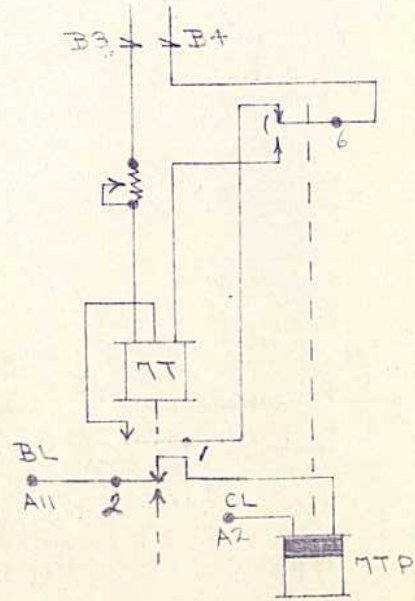
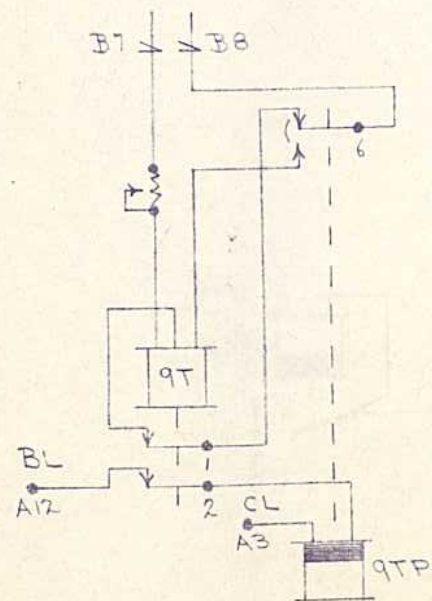
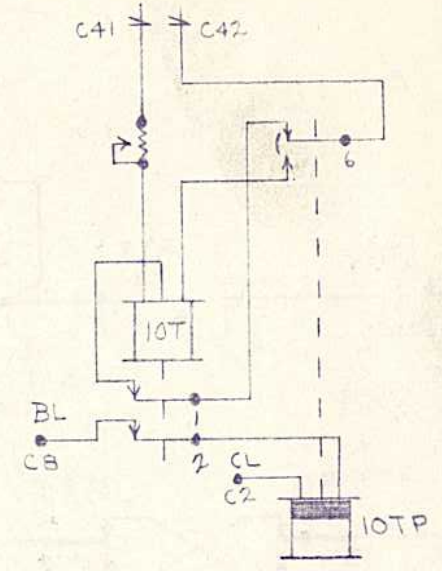
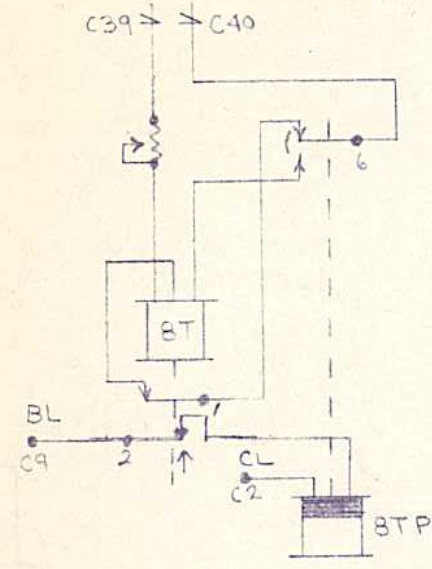
CH. ENGR. SIG. & COM.



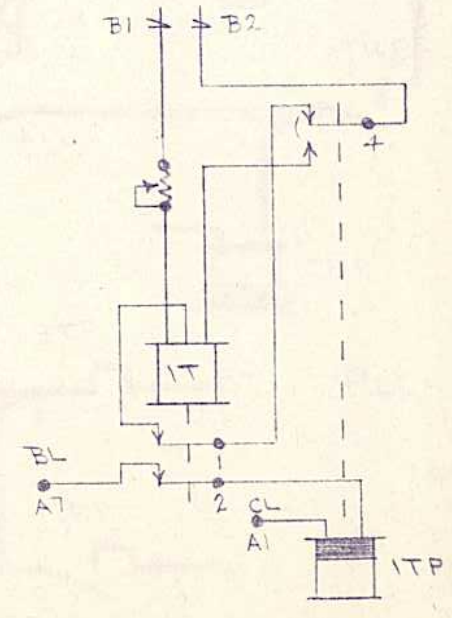
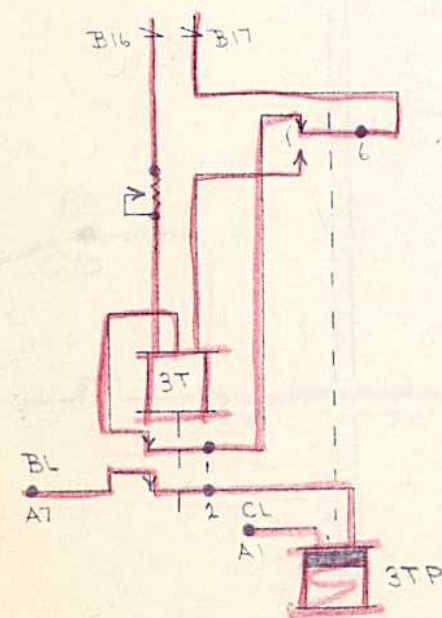
RELAY CASE 3



RELAY CASE 2



RELAY CASE 1



REV 5-4-59

CIRCUITS BY W.M.

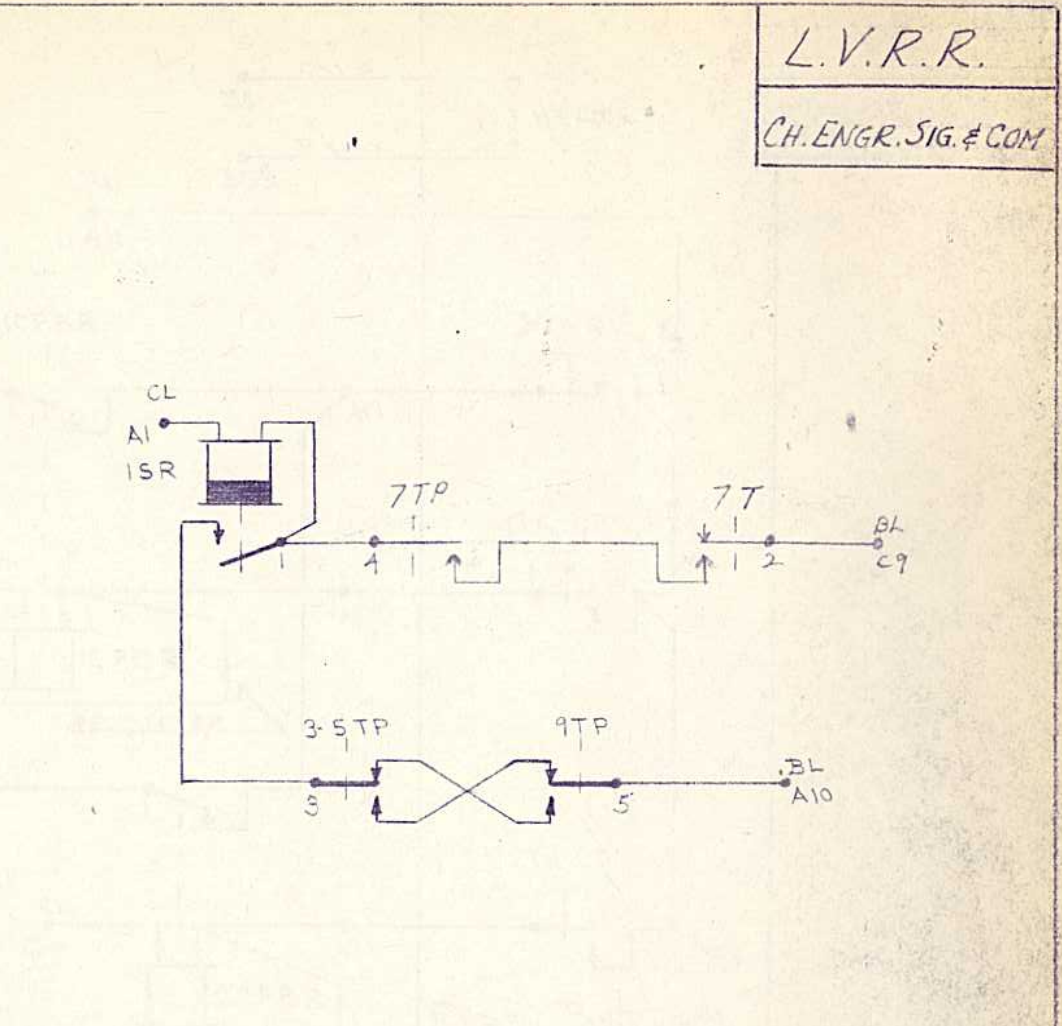
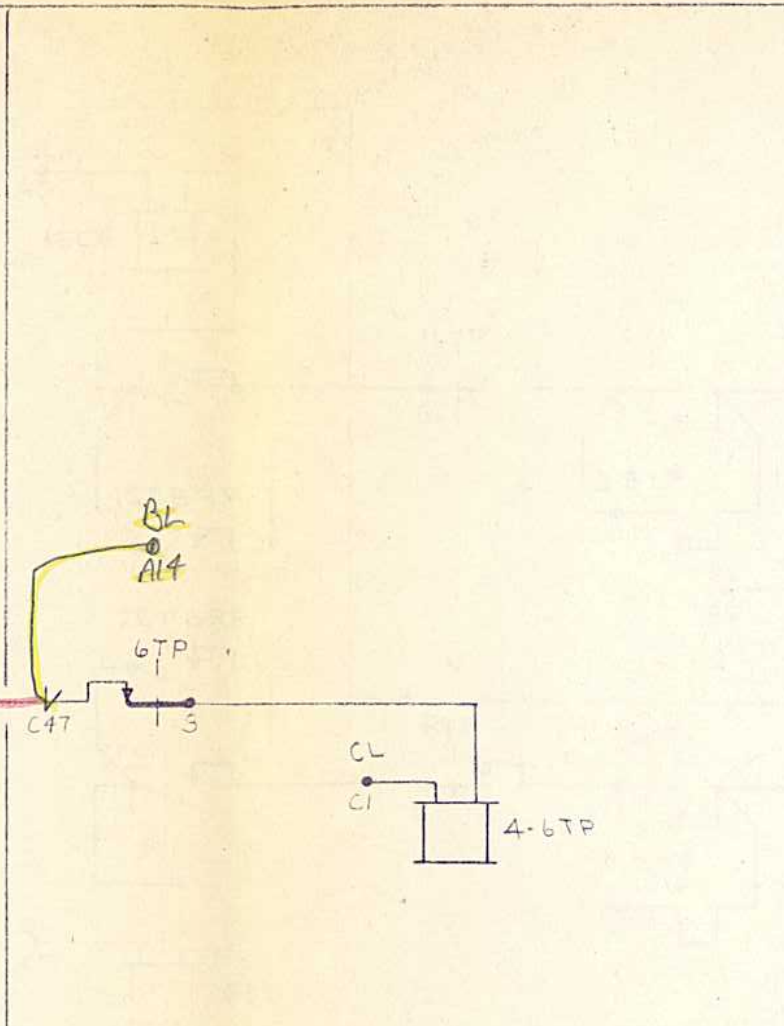
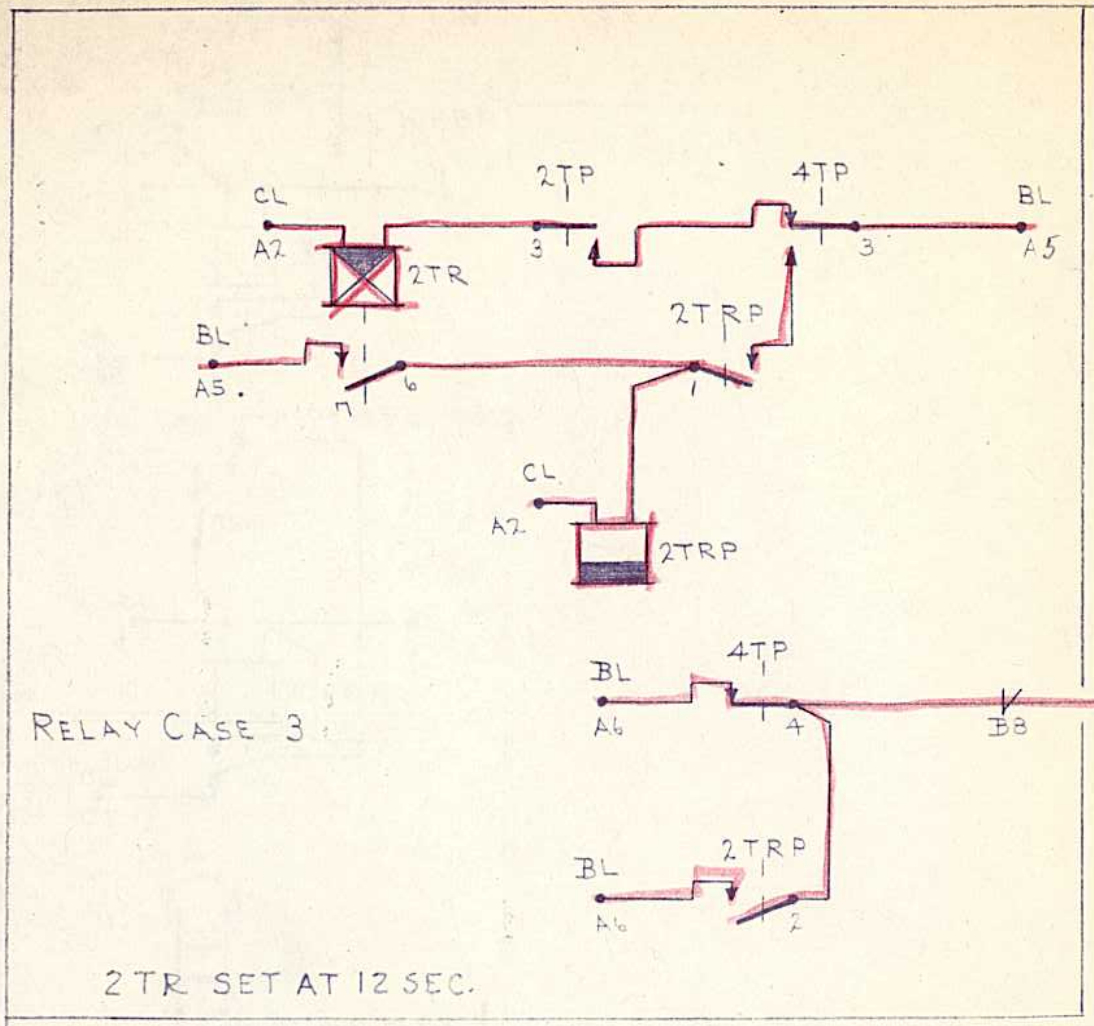
CHECKED BY R.T.

W.M. ST

5-8-58 450

L.V.R.R.

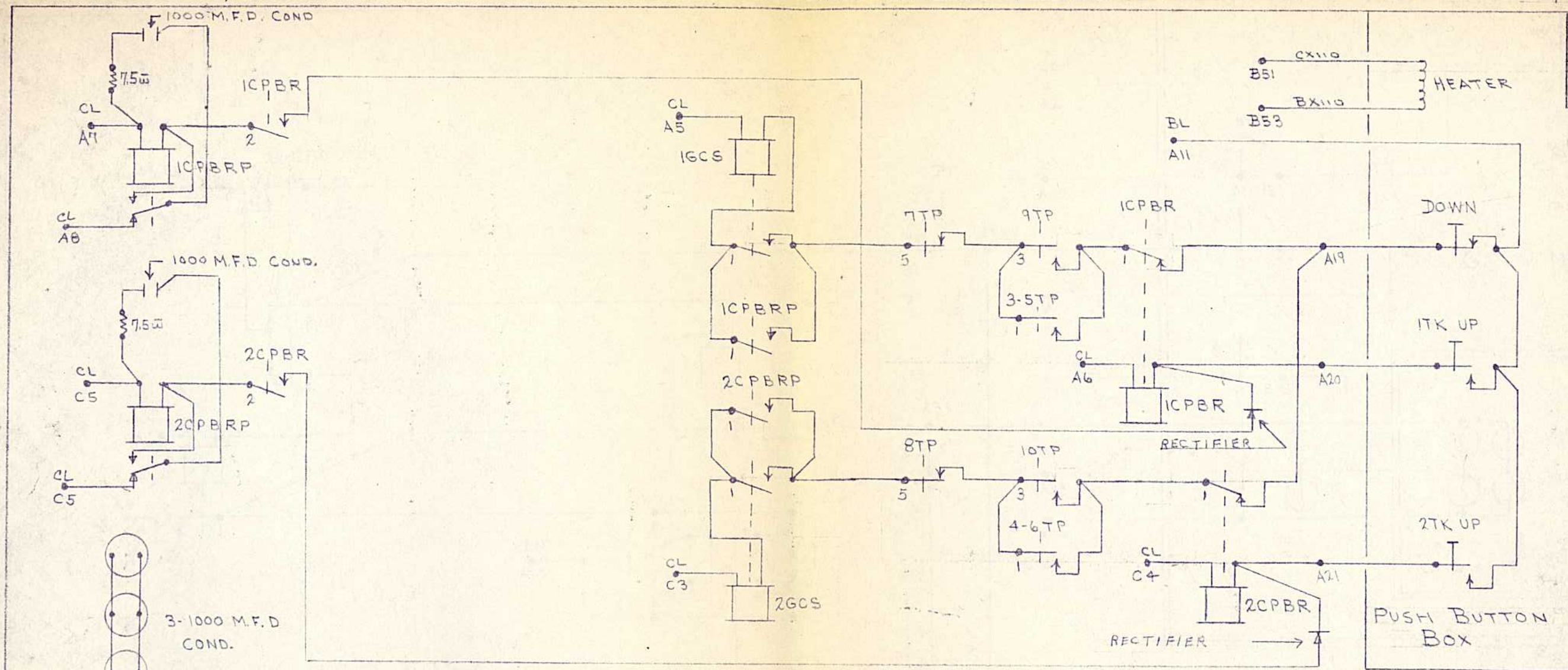
CH. ENGR. SIG. & COM.



REV 7-6-59	
REV 5-4-59	
CIRCUITS BY R.T	
CHECKED BY R.T	
R.T.	ST
5-8-58	450

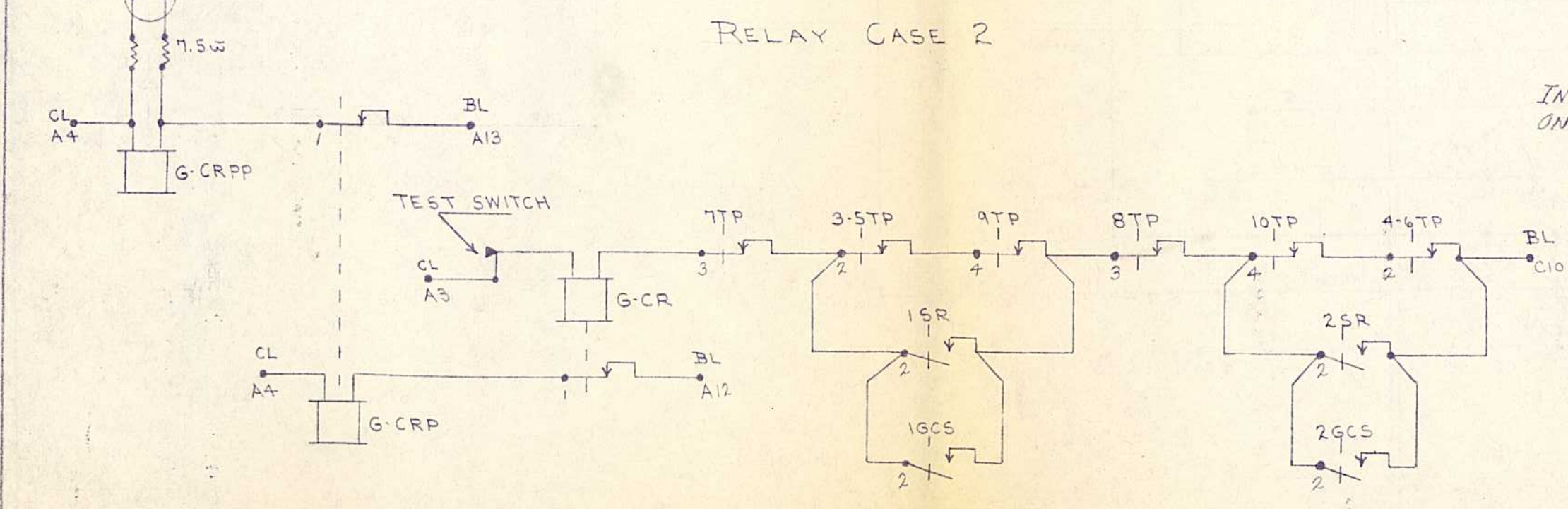
L.V.R.R.

CH. ENGR. SIG. & COM.



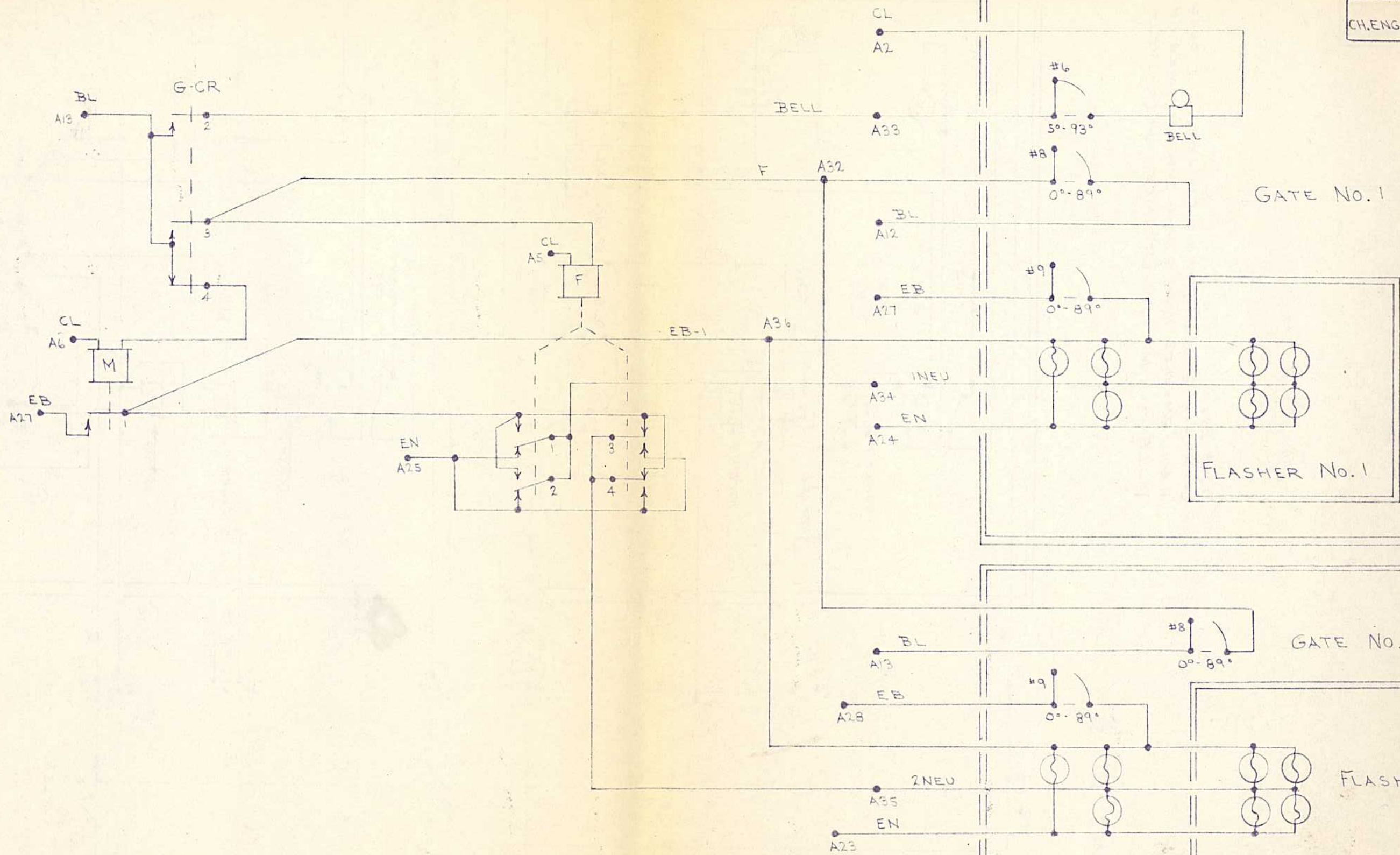
RELAY CASE 2

INSTALL SPRING HANGERS ON PBRP & GCS RELAYS



1-11-61	
2-12-60	
REVISED 3-17-59	
CIRCUITS BY WM	
CHECKED BY R.T.	
W.M	ST
5-8-58	450

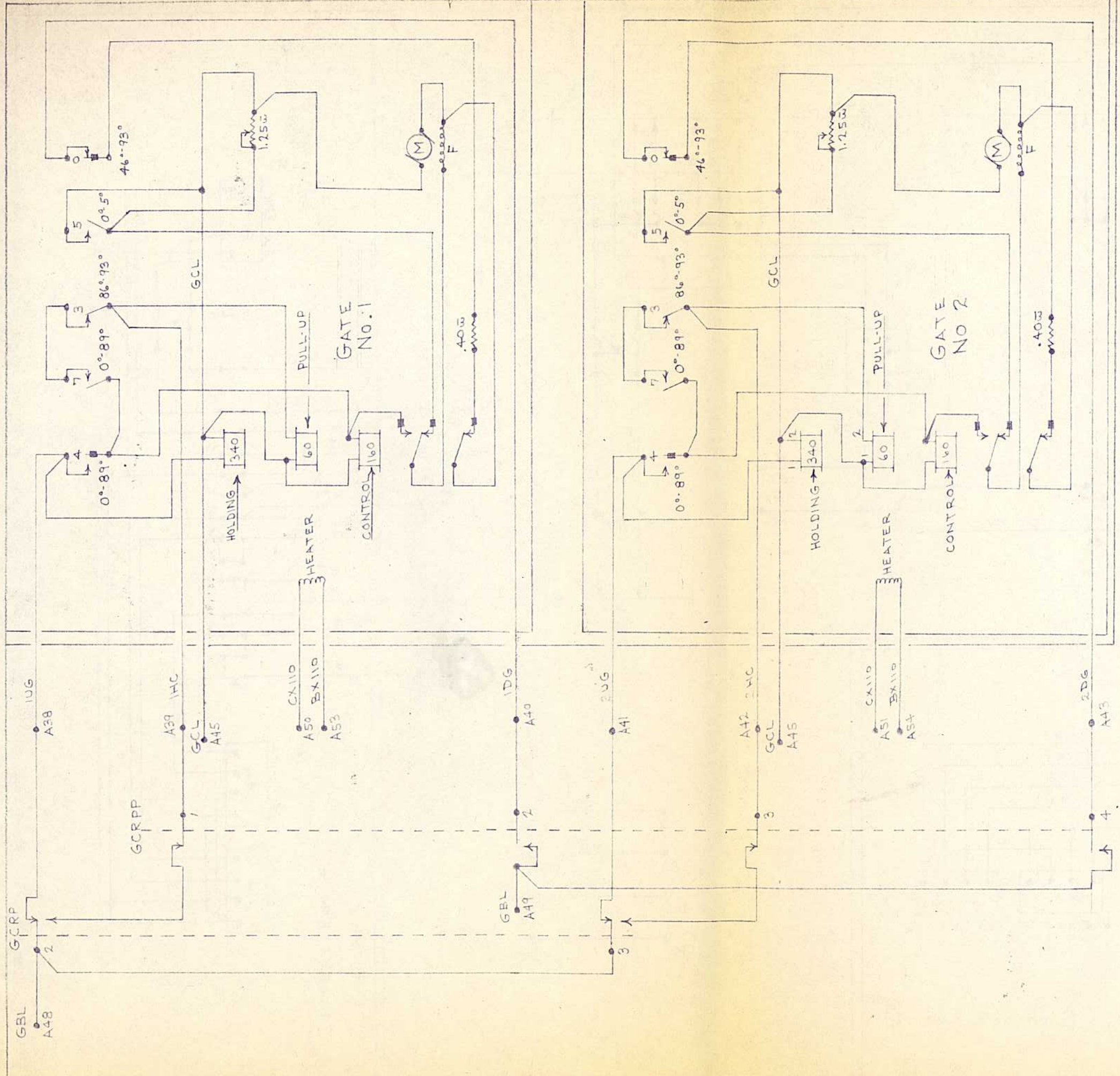
L.V.R.R.
CHENGR. SIG. & COM.



CIRCUITS BY W.M	
CHECKED BY R.T.	
WM	ST
5-9-58	450

L.V.R.R.

CH. ENGR. SIG. & COM.



NOTE - 2 WAY CAM FOLLOWER ON CONTACTS B & 9 SWAPPED WITH 3 WAY CAM FOLLOWER ON CONTACTS 5, 6 & 7, MAKING CONTACT 7 CLOSED 0° TO 89°.

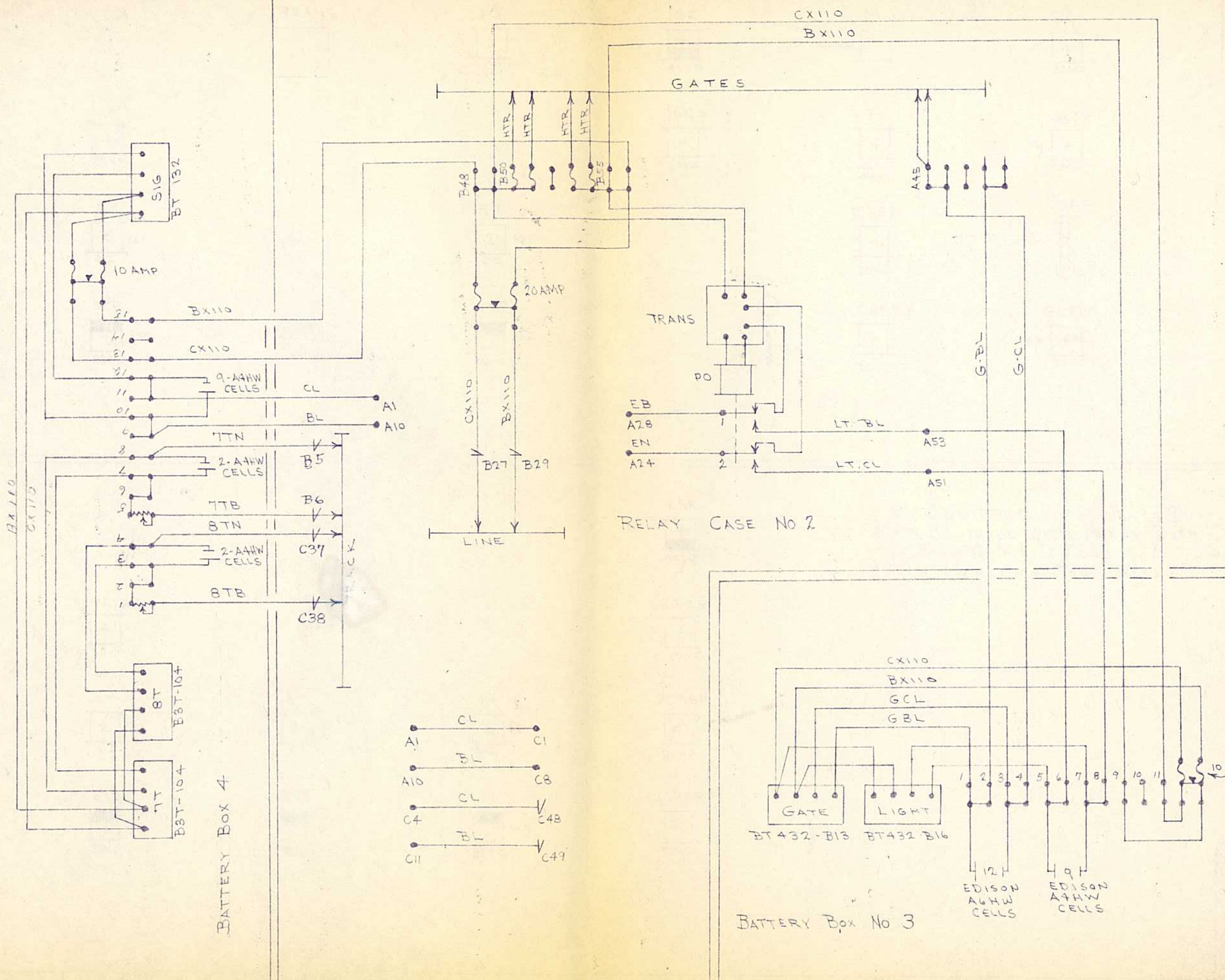
RELAY CASE NO. 2

CIRCUITS BY W.M.
CHECKED BY R.T.

W.M. S.T.

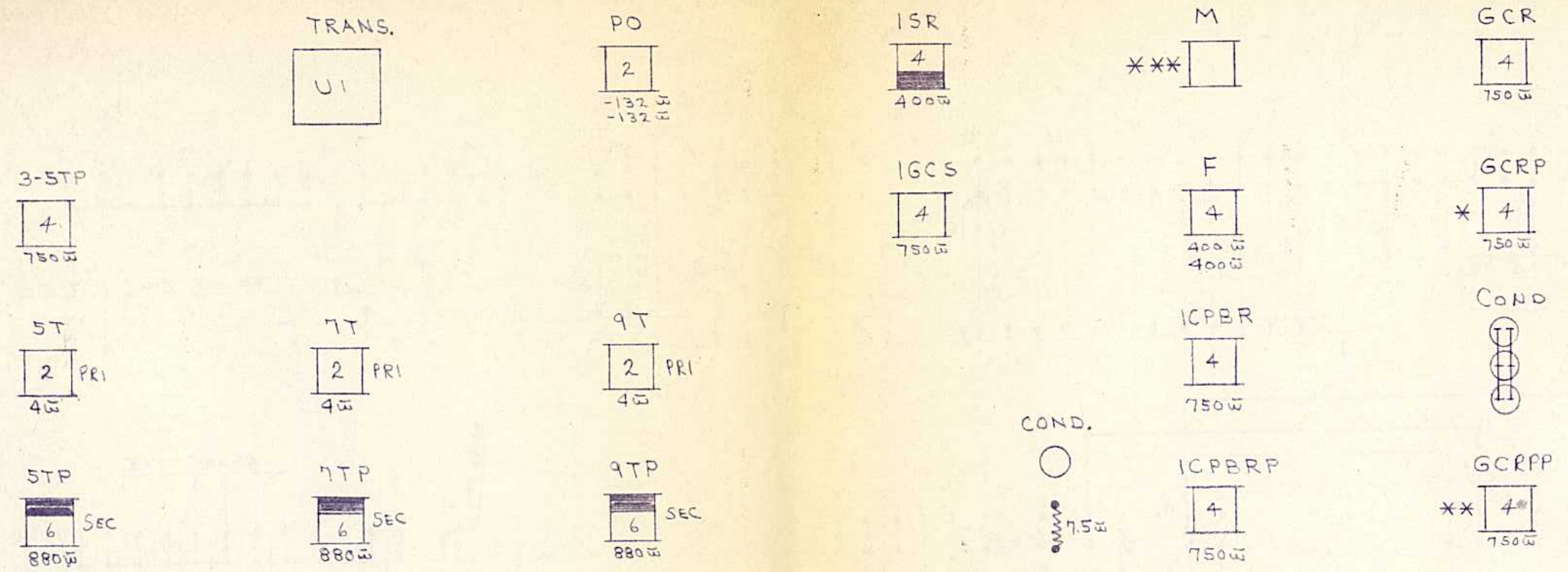
5-9-58 450

L.V.R.R.
CH. ENGR. SIG. & COM.



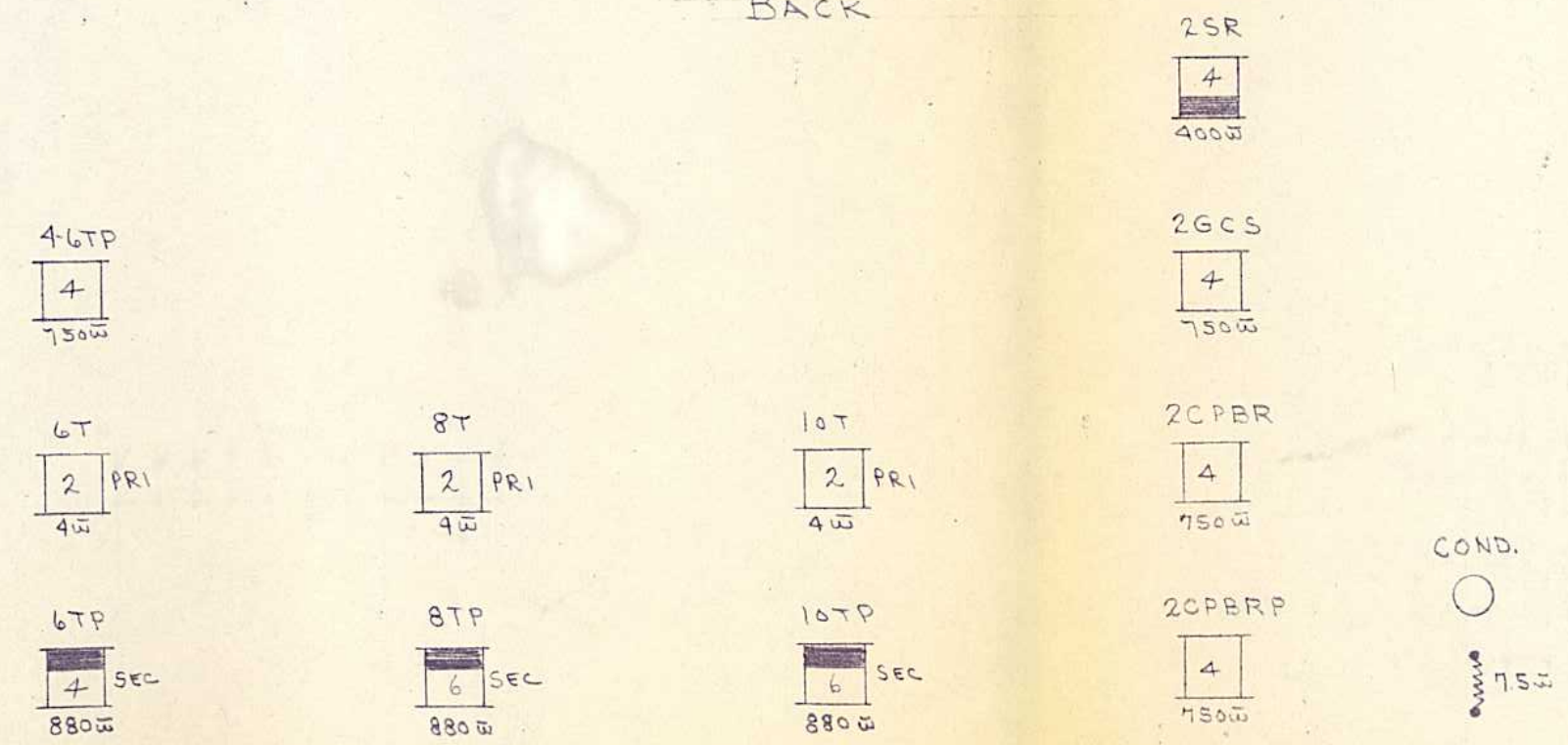
CIRCUITS BY WM	
CHECKED BY R.T.	
WM	ST
5-9-58	450

L.V.R.R.
CH. ENGR. SIG & COM.



FRONT

BACK

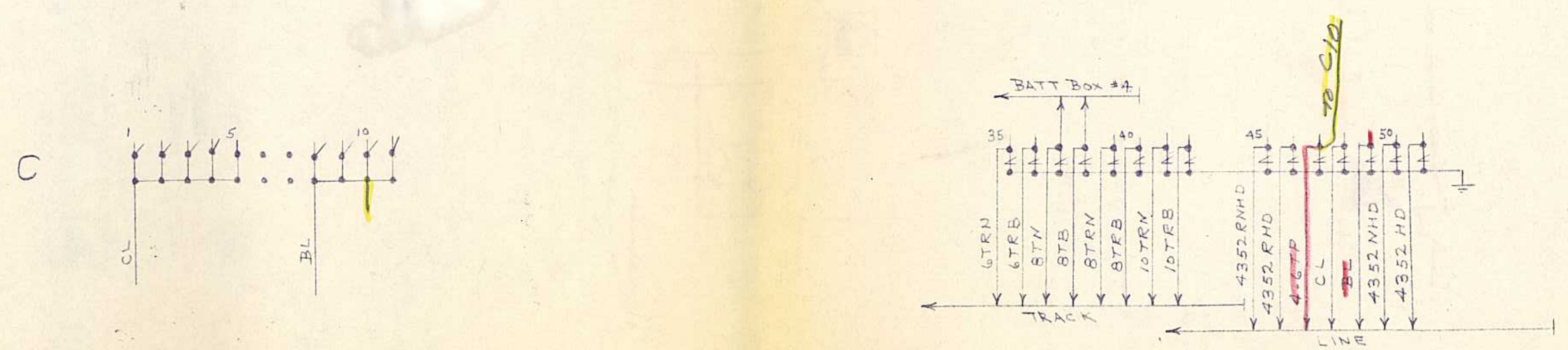
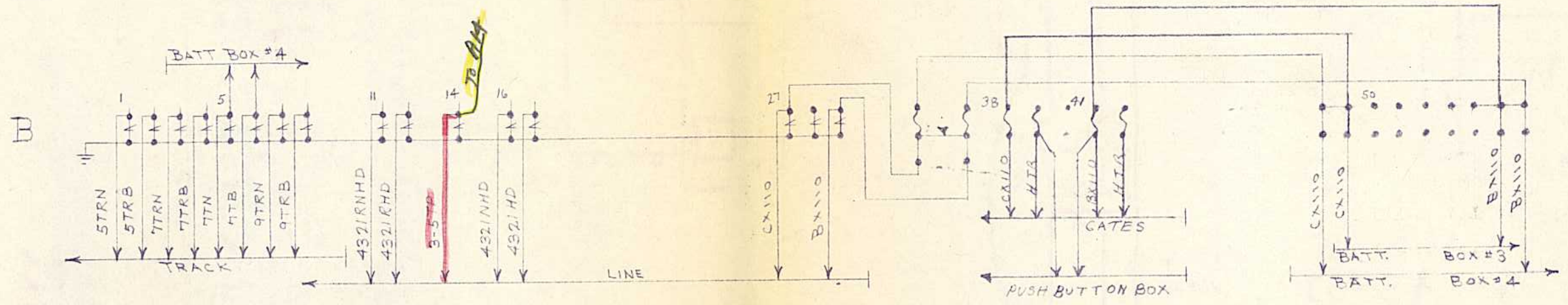
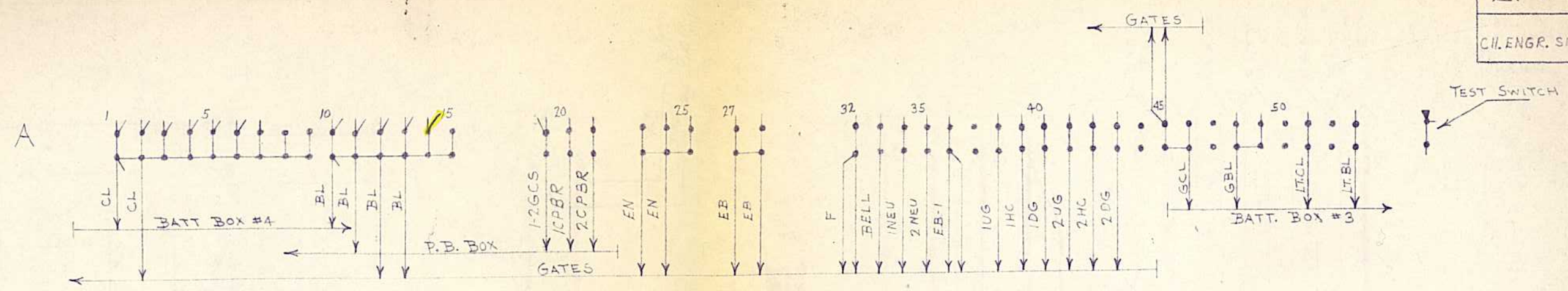


* ~ EQUIPPED WITH HEAVY DUTY CONTACTS
 ** ~ EQUIPPED WITH HEAVY DUTY CONTACTS AND
 3-1000 M.F.D COND. & 2-7.5 Ω RES.
 *** ~ MERCURY TYPE RELAY

REVISED 3-17-59	
CIRCUITS BY WM	
CHECKED BY R.T.	
WM	ST
5-9-58	450

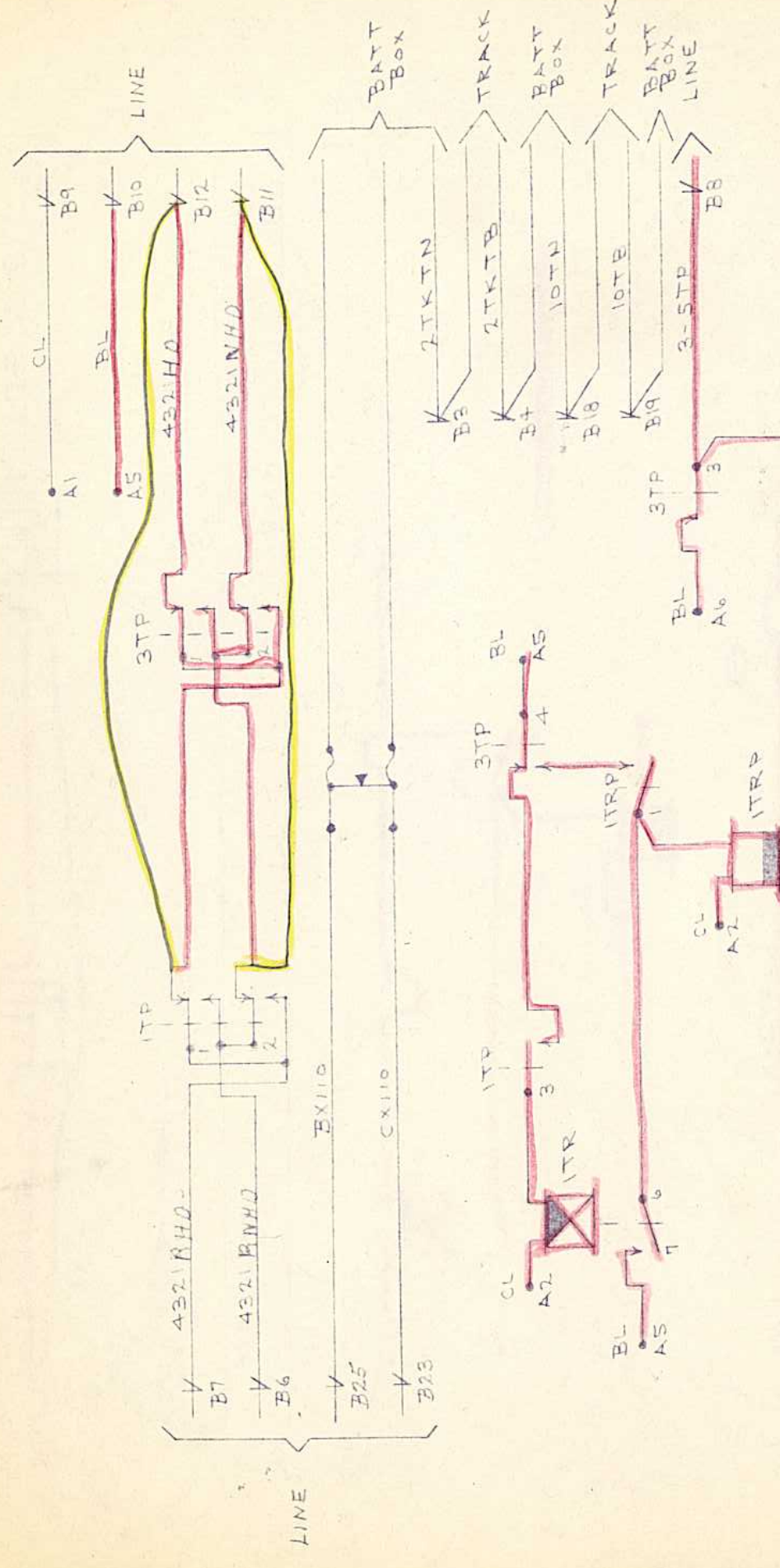
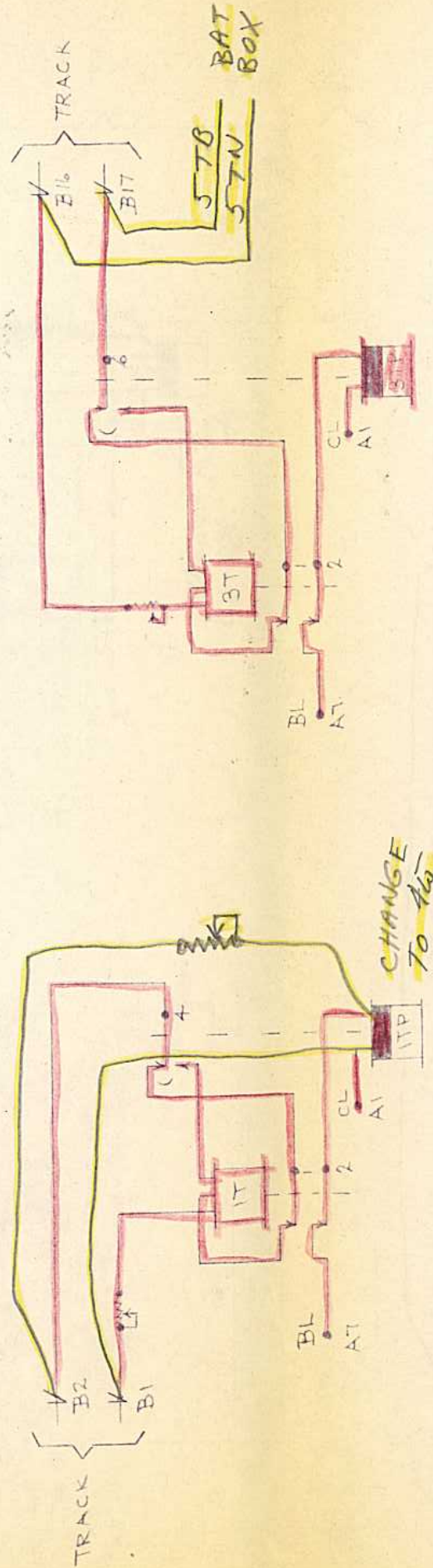
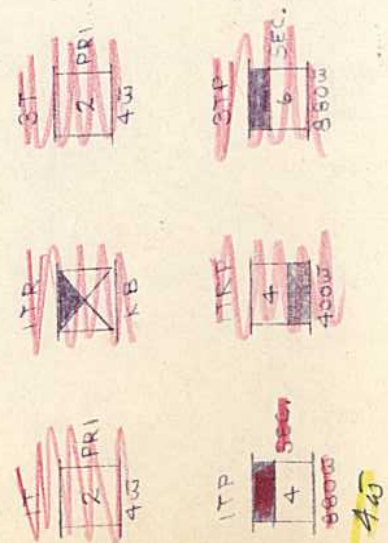
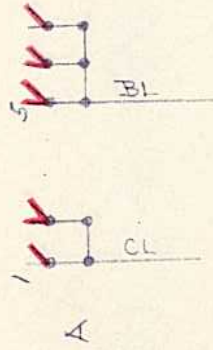
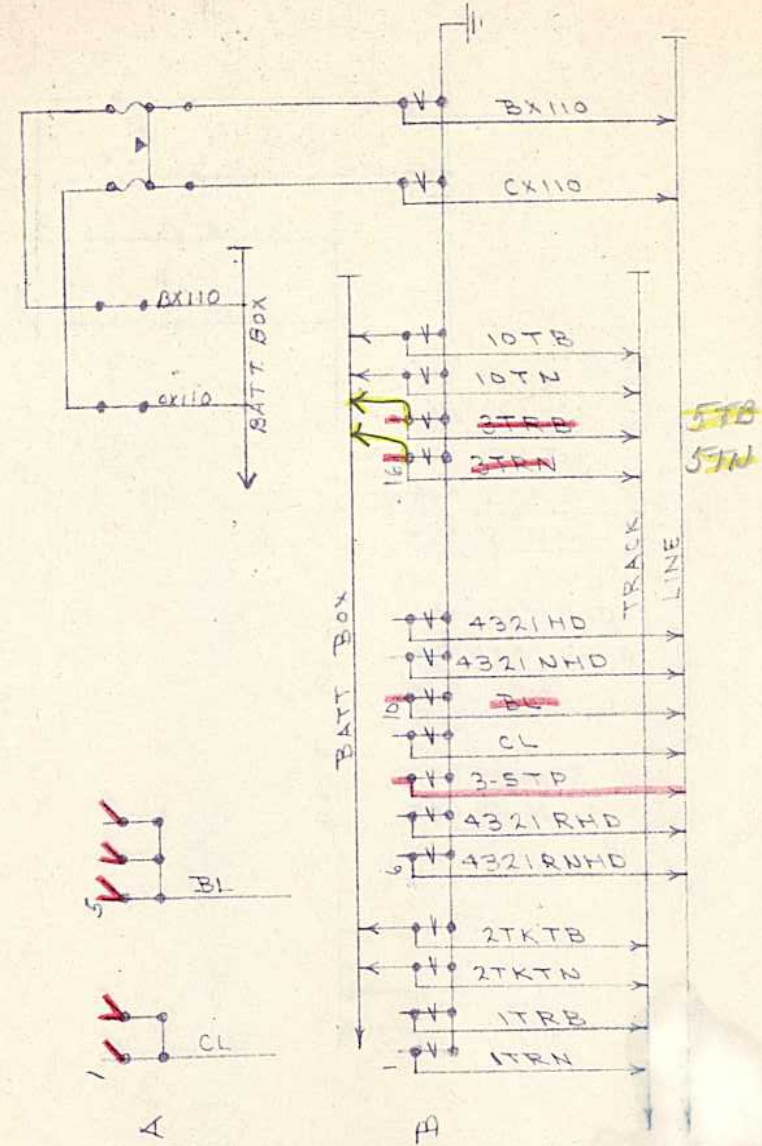
L.V.R.R.

CH. ENGR. SIG. & COM.



REVISED AS IN SERVICE 6-15-59
 REVISED 3-17-59
 CIRCUITS BY W.M.
 CHECKED BY R.T.
 W.M. ST
 5-12-58 450

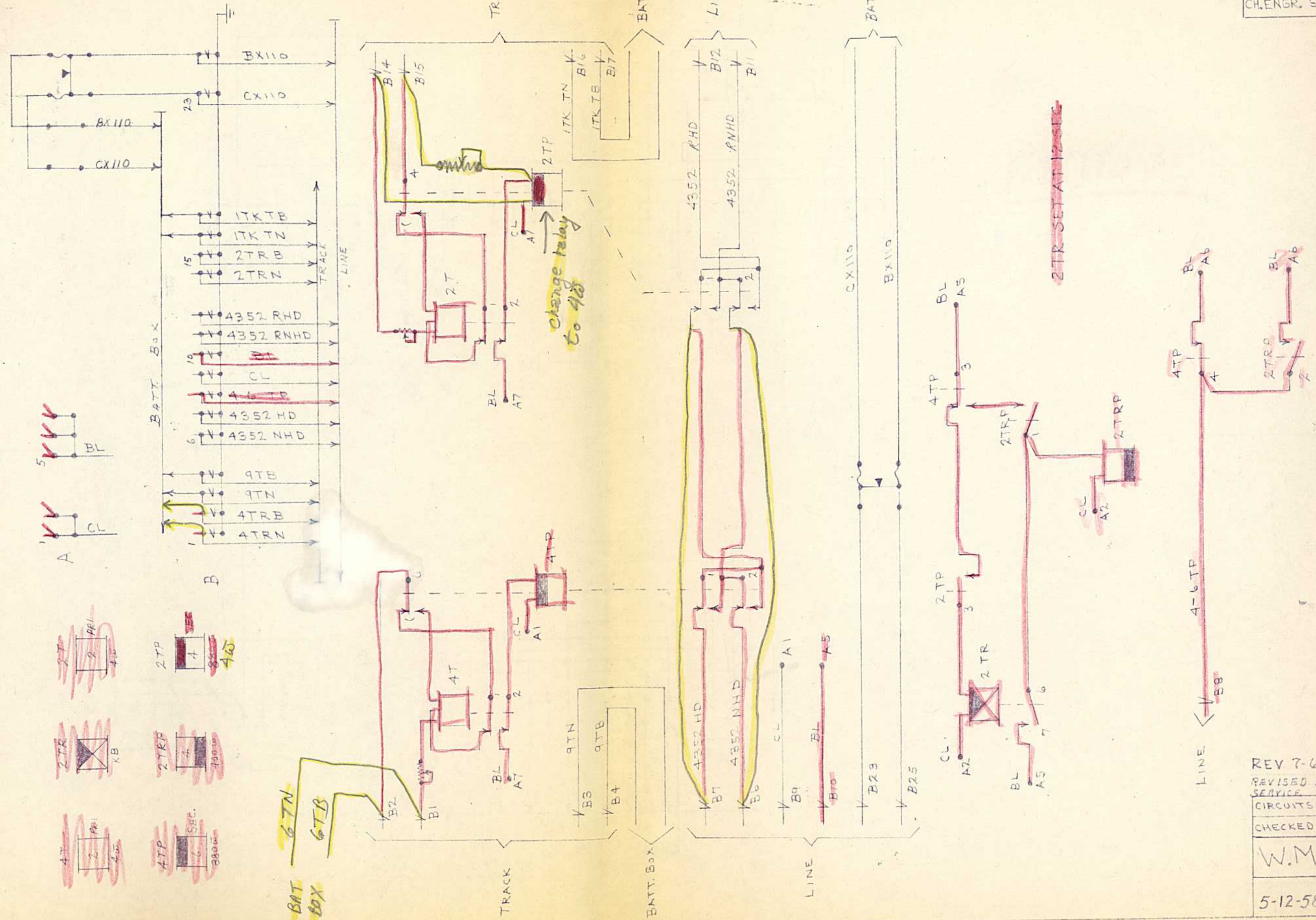
L.V.R.R.
CH. ENGR. SIG. & COM.



REV-7-6-59
 REVISED AS IN
 SERVICE 6-15-59
 CIRCUITS BY WM
 CHECKED BY R.T.
 WM ST
 5-12-58 450

L.V.R.R.

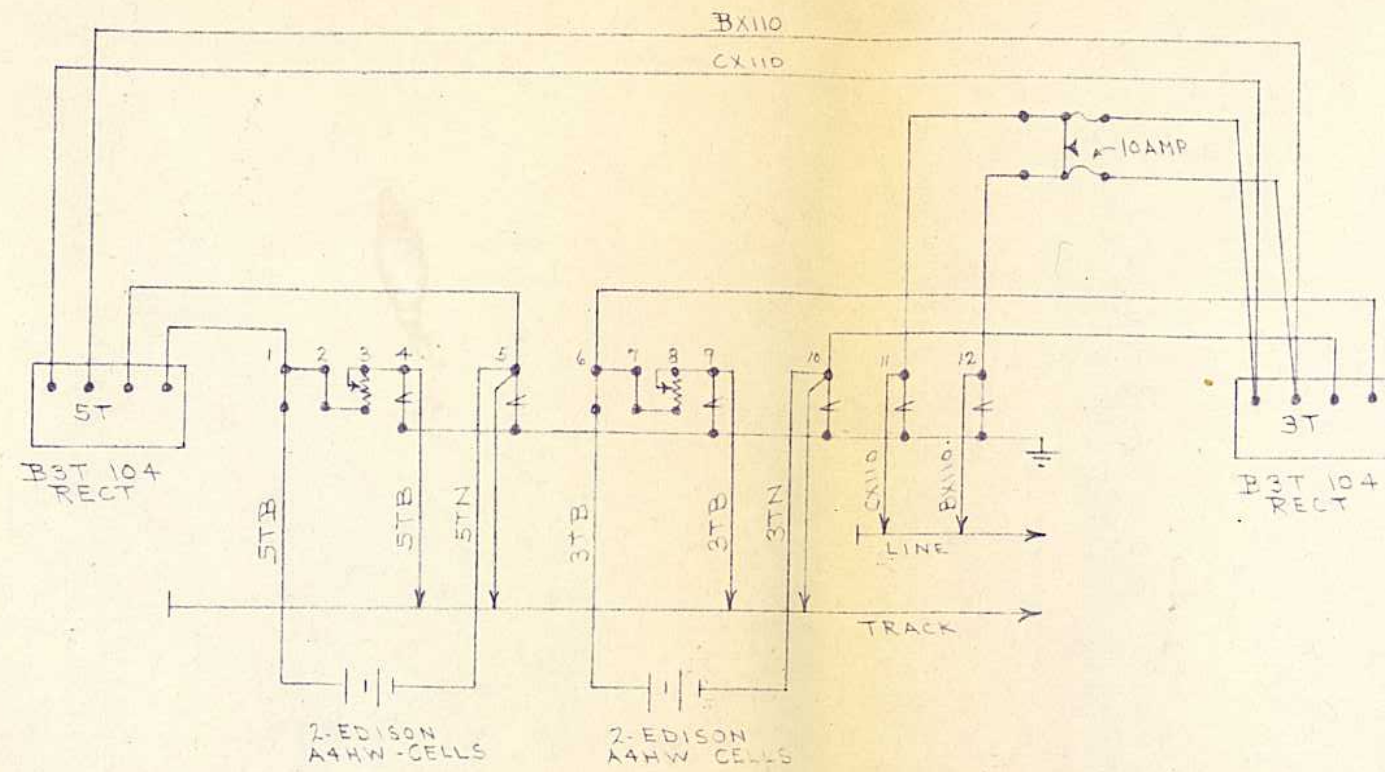
CH. ENGR. SIG. & COM.



REV 7-6-59
 REVISED AS IN
 SERVICE 8-15-59
 CIRCUITS BY W.M.
 CHECKED BY R.T.
 W.M. S.T.
 5-12-58 450

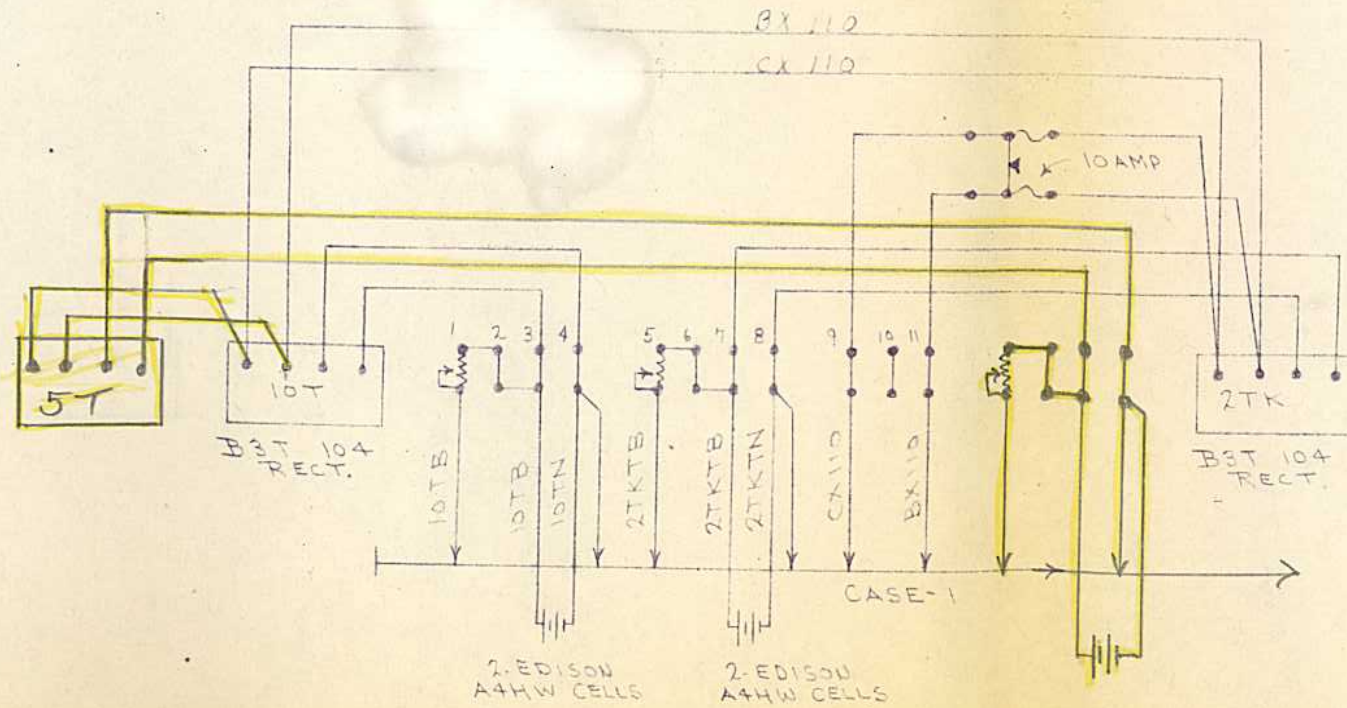
L.V.R.R.

CH ENGR. SIG. & COM.



REMOVE

BATTERY Box 2

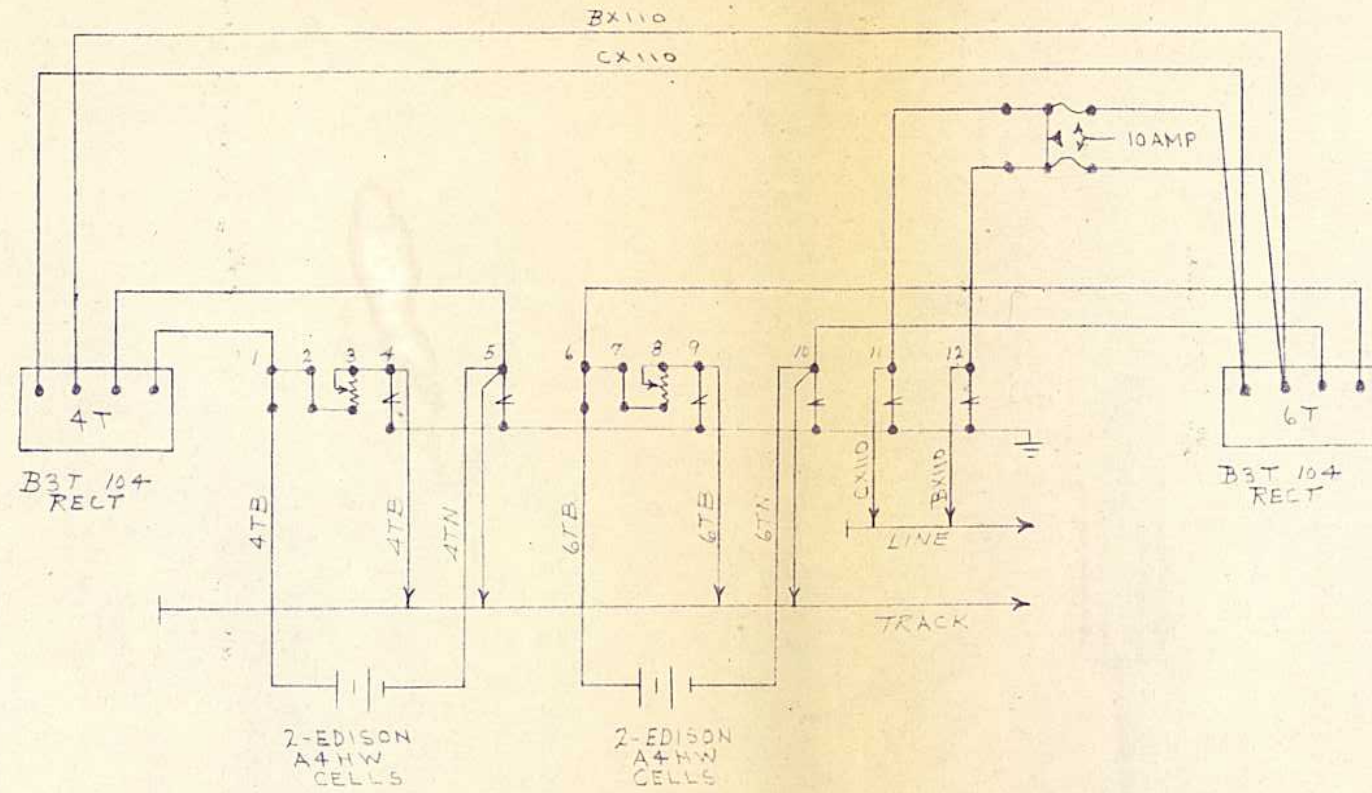


BATTERY Box 1

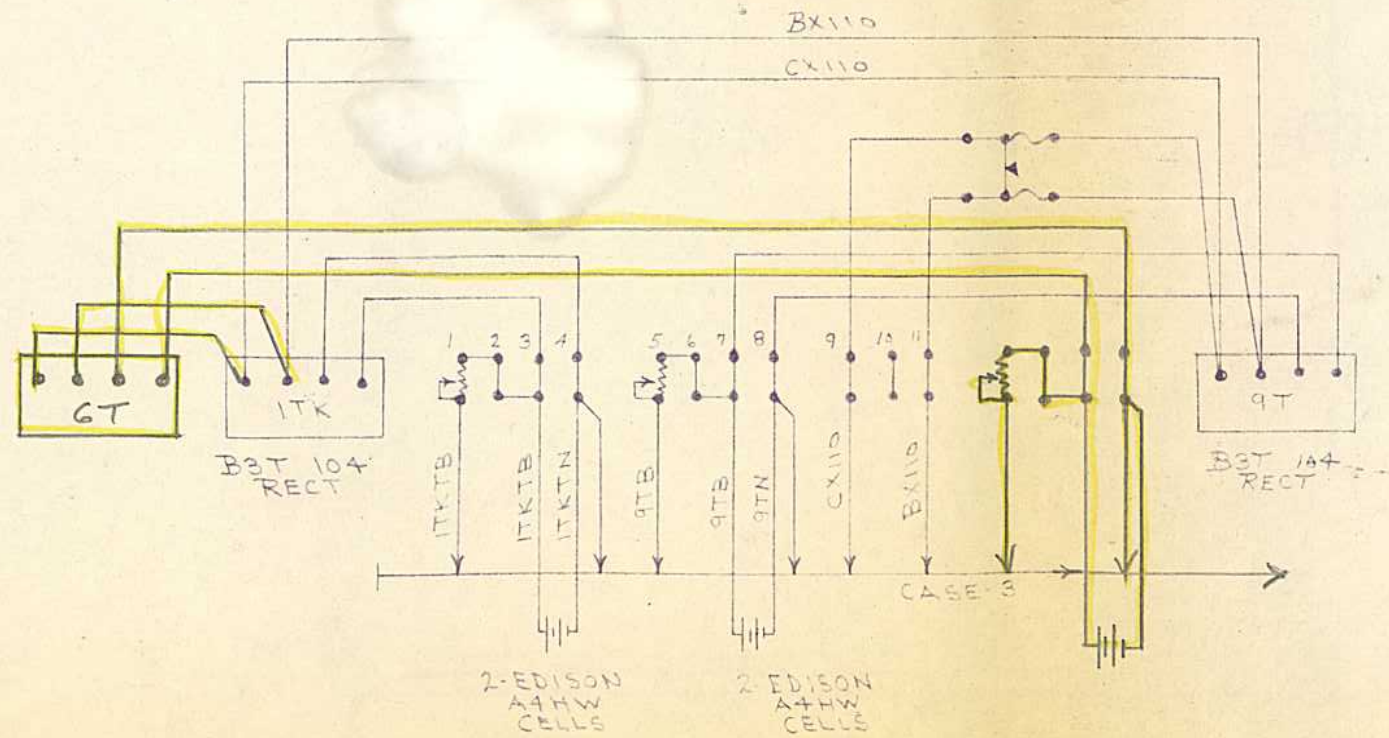
CIRCUITS BY W.M.	
CHECKED BY R.T.	
W.M.	ST
5-12-58	450

L. V. R. R.

CH. ENGR. SIG. & COM.



REMOVE
BATTERY BOX 5



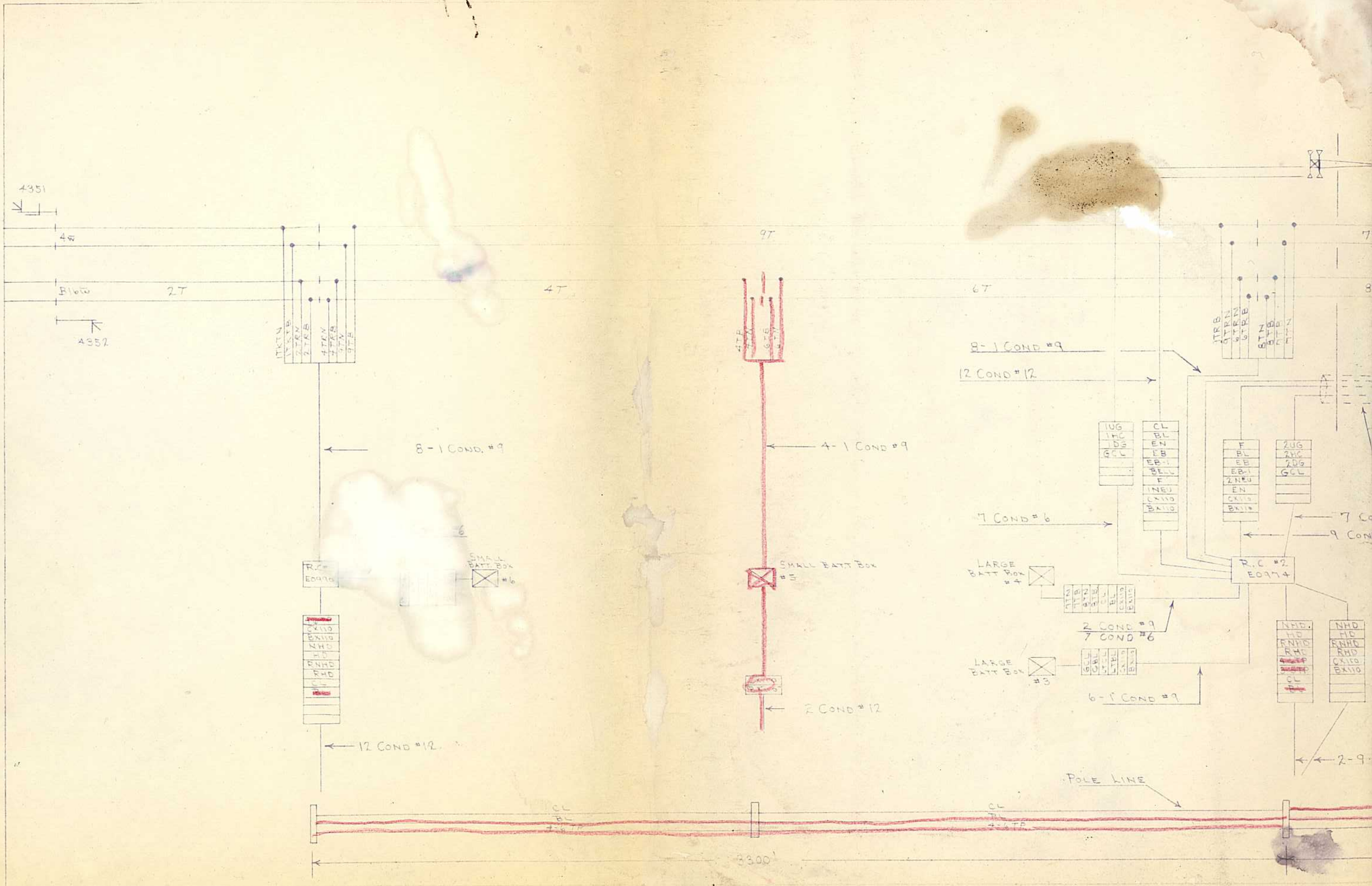
BATTERY BOX 6

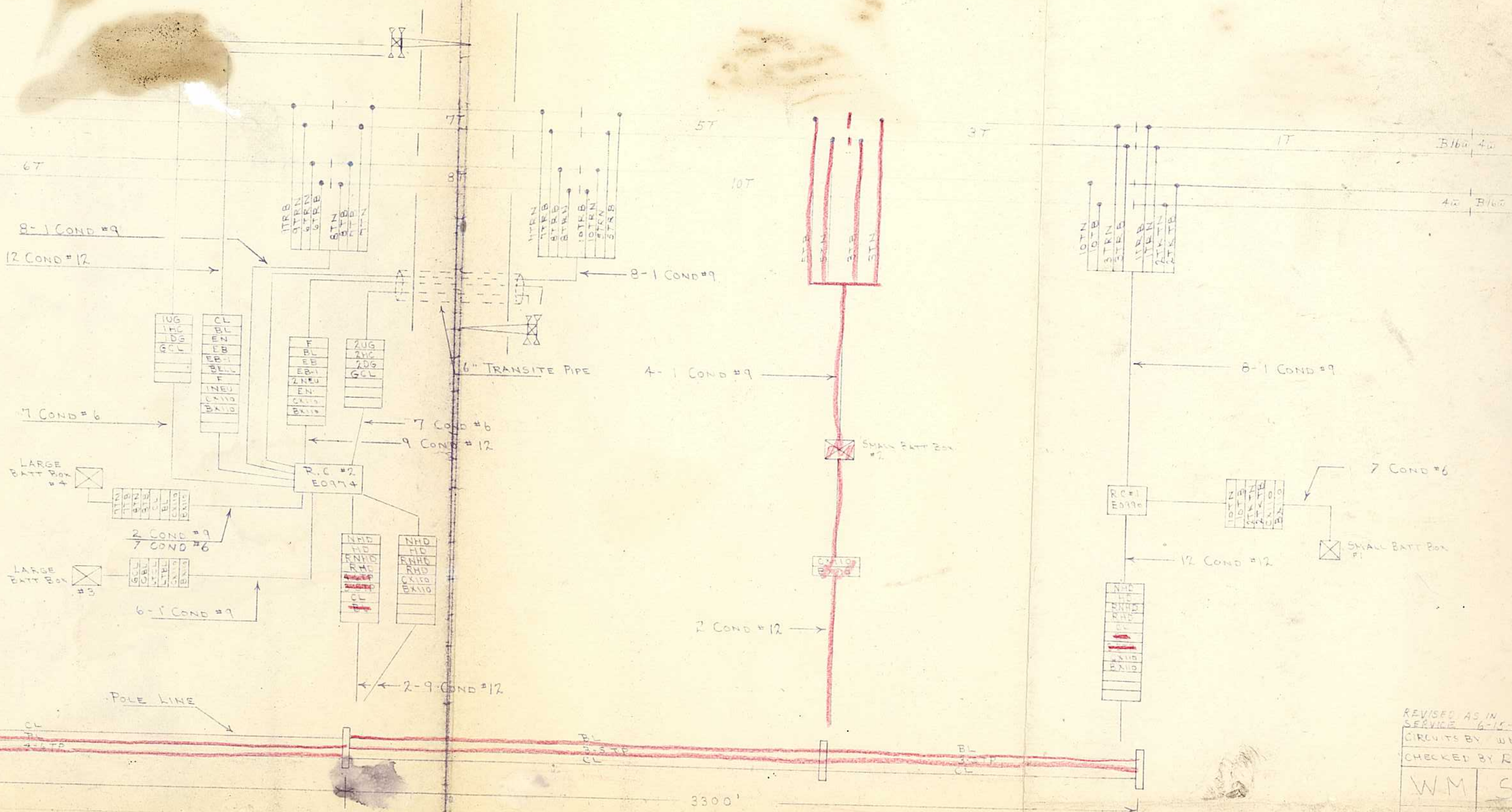
CIRCUITS BY WM

CHECKED BY R.T.

WM ST

5-12-58 450





REVISED AS IN SERVICE 6-15-59
 CIRCUITS BY WM
 CHECKED BY R.T.
 WM ST
 5-8-58 450